



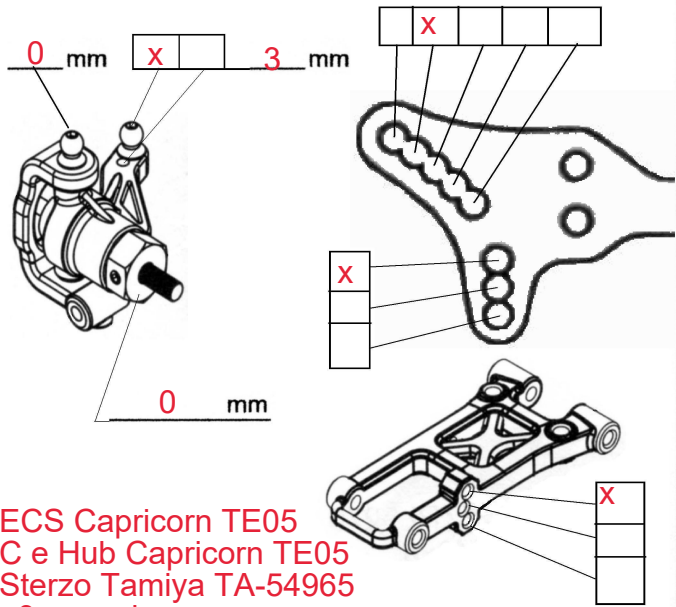
### Track Conditions

Type :  Carpet  Asphalt  
 Place :  Indoor  Outdoor  
 Surface:  Smooth  Med.  Bumpy  
 Note: temperatura 10/14°C pista asciutta

Size:  Open  Med.  Tight  
 Traction:  High  Med.  Low  
 Track Temp/Air Temp: \_\_\_\_\_ / 12°C

### Front Suspension

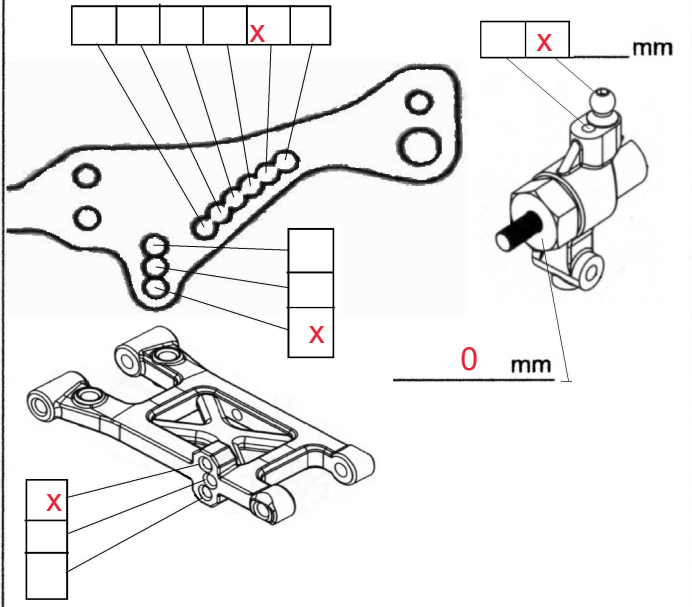
Track Width: \_\_\_\_\_ mm  Gear Diff \_\_\_\_\_ wt  
 Toe Angle: 2 °  Solid Axle (Spool)  
 Caster: 4 °  One Way  
 Camber: 2 °  Ball  
 Ride Height: 6 mm Anti-Roll Bar: Ø no mm  
 Down Stop: \_\_\_\_\_ mm



ECS Capricorn TE05  
 C e Hub Capricorn TE05  
 Sterzo Tamiya TA-54965  
 +3mm ackermann

### Rear Suspension

Track Width: \_\_\_\_\_ mm  Gear Diff 5000 wt  
 Toe Angle: -3 °  Ball  
 Camber: 2 °  
 Ride Height: 6.5 mm  
 Down Stop: \_\_\_\_\_ mm Anti-Roll Bar: Ø \_\_\_\_\_ mm



### Motor

Brand: Robitronic  
 Turns: 3000 kV  
 Timing: \_\_\_\_\_  
 Pinion : \_\_\_\_\_

### Electronics

Servo: ignoto  
 ESC: Robitronic 50A  
 Battery: \_\_\_\_\_

### Shocks

Hole Size: F std R std  
 Holes In Piston: F 4 R 4  
 Oil wt: F 350 R 350  
 Springs: F 2.4/2.6 P verde MARKA R rossa rally  
 Rebound: F \_\_\_\_\_ R \_\_\_\_\_  
 Note: \_\_\_\_\_  
 Thread Length: F \_\_\_\_\_ R \_\_\_\_\_

## Option Parts

Carbon chassis plate	Pivot block Ant. All. (f)
Pivot block Ant. All. (r)	Carbon front shock tower
Carbon rear shock tower	Pivot block post. All. (f)
Pivot block post. All.(r) 0°	Pivot block post. All.(r) 2°
Pivot block post. All.(r) 2.5°	Pivot block post. All.(r) 3°
Steering block crank All.	Upper deck carbon
C hub All.	Hub Ant. All.
CVD Axle post.	Hub carrier post. All.
Servo mount All.	

### Tires

Insert : TP 26R  
 Wheel : \_\_\_\_\_  
 Shore/deg : \_\_\_\_\_  
 Compound : \_\_\_\_\_  
 Tire Temp : \_\_\_\_\_  
 Tire additive : niente non pulire

### Body

Body: RS3 Montech  
 Note: \_\_\_\_\_

tiranti di collegamento tra colonnine sterzo e tirante camber, no upperdeck